

To view this email as a web page, go [here](#).

PEOPLE TO PEOPLE INTERNATIONAL

our world

Our World e-news brings students ages 13-18 around the globe together to learn how they can make a difference and spread PEACE THROUGH UNDERSTANDING. | September 2011

Global Youth Forum

Increase your knowledge of the world, experience cultures and have fun at the [10th annual Global Youth Forum](#) (GYF).

At the GYF you will gain the insight and skills that show universities and future employers that you are committed to thriving in our global, multi-cultural society.

Registration closes September 23. [View details and register today](#).



Delegates at the 2010 GYF

The Latest

Don't miss these important announcements!

Are you an adult advisor? You have special access to PTPI's [In Brief](#) with the latest updates for adult members.

Chapter membership rosters are due November 1. [Contact Kristine](#) with questions.

When is PTPI's scholarship application deadline? Check out [PTPI's Student Programs calendar](#) to get organized.

Global Youth Service Day (GYSD) was a hit! [Read about](#) PTPI members around the world who made a difference in their community. Plan to take part in GYSD 2012, April 20-22.

We want your stories for the [PTPI Blog](#). Your chapter could be featured next! [Follow these simple guidelines](#) to tell us your story. While you're at it, [sign up to receive blog posts](#) in your inbox.



JUST FOR STUDENT AMBASSADORS

As a returning Student Ambassador, you receive one free year of People to People International membership. [Learn more about PTPI and opportunities for students.](#)

Your member ID is . This number serves as your username and password to [access PTPI's online Member Center](#) to manage your membership account.

NEW STUDENT CHAPTER

PTPI extends a warm welcome to the members of PTPI's Cairo, Egypt (Nile of Peace) Student Chapter. The chapter joined our international family on August 4, 2011.

[Find a PTPI Student Chapter in your area.](#)

Not a chapter near you? [Start one of your own!](#)

NOTEWORTHY CHAPTER ACTIVITIES

PTPI Student Chapter members carry out inspiring projects devoted to humanitarianism and cultural understanding. [Check out this section](#) to learn about recent chapter activities and events, and become motivated to create your own. Be sure to send us news and photos of your activities.

TIP OF THE MONTH

Kick off the school year with a One Grand Day project!

In one day you can raise both awareness and funds to address famine and drought in East Africa. [View the One Grand Day guidelines](#) and implement this project in your community.

1 Day x 10 Friends x \$100 = \$1,000 for East Africa



PHOTO OF THE MONTH

In July 2011, 29 students journeyed to South Africa with PTPI's EXPERIENCE program. Delegates were immersed in South African culture while they volunteered at township schools in Cape Town and an HIV/AIDS facility in

Johannesburg. [Read more about this life-shaping journey.](#)



EXPERIENCE: South Africa delegates Emily Christianson and Sara Dunlap paint faces of children at the Children of Hope township school in Cape Town, South Africa. The EXPERIENCE: South Africa program traveled July 8-21, 2011.

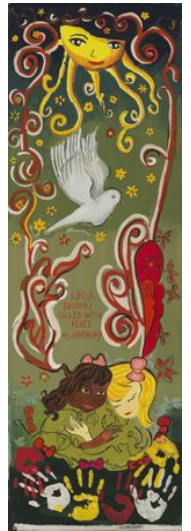
[View more photos from EXPERIENCE: South Africa.](#)

CULTURE

Each year PTPI invites students ages 4-18 to create Global Youth Murals, works of art that illustrate cultures, communities and ideas about peace. [Learn more](#) and download the [Global Youth Murals Guidelines](#).

Submit your mural to PTPI by October 31.

[Visit the online gallery of Global Youth Murals.](#)



EZ Poll

1. How active are you on Twitter?

Not at all, hate tweets

Somewhat, but I don't check it that often

Very active, Twitter is my number 1 source for information -- #ptpi

What's Twitter? I get/send messages via carrier pigeon

You must click the link "view as a web page"
at the top of this email to complete this poll.

If you do not receive a confirmation page after clicking submit, please click [here](#).



International

Join our online community:



People to People International
911 Main Street, Suite 2110
Kansas City, Missouri 64105 USA
+1.816.531.4701 *phone*
+1.816.561.7502 *fax*
www.ptpi.org

This email was sent to: kathubb@gmail.com. If this email was forwarded to you by another recipient and you would like to subscribe to PTPI's e-communications, [visit here](#). If you prefer not to receive our emails, or want to submit a question or comment, please use the following links:

[Manage Subscriptions](#) | [One-Click Unsubscribe](#) | [Questions or Comments](#) | [Privacy Policy](#)